

CONTAINER SPECIFICATIONS

Interior Dimensions Door Opening Tare Weight Cubic Capacity Payload

20' STANDARD

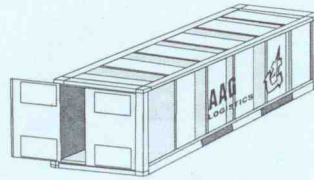
L: 5.919m	19'5"	W: 2.286 m	7'6"	1,900 kg.	33.0 cbm.	22,100 kg
W: 2.340m	7'8"	H: 2.278 m	7'5"	4,189 lbs	1,165 cu.ft.	48,721 lbs.
H: 2.380m	7'9 1/2"					

40' STANDARD

L: 12.051m	39'6 1/2"	W: 2.286 m	7'6"	3,084 kg.	67.3 cbm.	27,397 kg
W: 2.340m	7'8"	H: 2.278 m	7'5"	6,799 lbs	2,377 cu.ft.	60,401 lbs.
H: 2.380m	7'9 1/2"					

40' HIGH CUBE CONTAINER

L: 12.056 m	39'6 1/2"	W: 2.340 m	7'8"	2,900 kg.	76.0 cbm.	29,600 kg
W: 2.347m	7'8 1/4"	H: 2.585 m	8'5 3/4"	6,393 lbs.	2,684 cu.ft.	65,256 lbs.
H: 2.684m	8'9 1/2"					



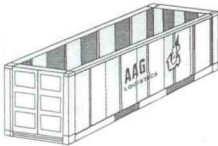
Interior Dimensions Door Opening Top Opening Tare Weight Cubic Capacity Payload

20' OPEN TOP CONTAINER

L: 5.919m	19'5"	W: 2.286 m	7'6"	L: 5.425 m	17'9 1/2"	2,174 kg.	31.6 cbm.	21,826 kg.
W: 2.340m	7'8"	H: 2.581 m	7'4 1/2"	W: 2.222 m	7'3 1/2"	4,793 lbs.	1,116 cu.ft.	48,117 lbs.
H: 2.380m	7'9 1/2"							

40' OPEN TOP CONTAINER

L: 12.043m	39'6"	W: 2.279 m	7'5 1/2"	L: 11.585 m	38'	4,300 kg.	64.0 cbm.	26,181 kg.
W: 2.338m	7'8"	H: 2.272 m	7'5 1/4"	W: 2.162 m	7' 1"	9,480 lbs.	2,260 cu.ft.	57,270 lbs.
H: 2.272m	7'5 1/4"							



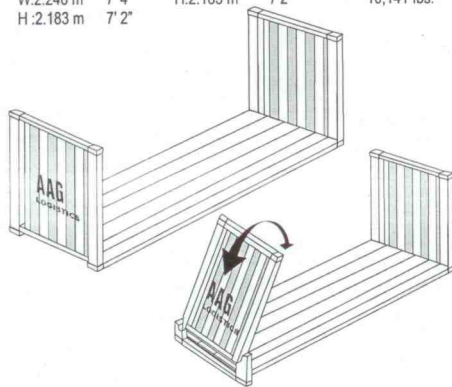
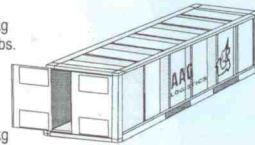
Interior Dimensions Door Opening Tare Weight Cubic Capacity Payload

40' HIGH CUBE REEFER CONTAINER

L: 11.557 m	37' 11"	W: 2.286 m	7'6"	4,320 kg.	65.8 cbm.	28,180 kg
W: 2.286 m	7' 6"	H: 2.454 m	8' 1/2"	9,524 lbs.	2,324 cu.ft.	62,126 lbs.
H: 2.491 m	8' 2"					

40' REEFER CONTAINER

L: 11.207 m	36' 9"	W: 2.216 m	7'3"	4,600 kg.	54.9 cbm.	25,881 kg
W: 2.246 m	7' 4"	H: 2.183 m	7'2"	10,141 lbs.	1,940 cu.ft.	57,059 lbs.
H: 2.183 m	7' 2"					



Interior Dimensions Tare Weight Payload

20' FLAT RACK

L: 5.702 m	18' 8 1/2"	2,330 kg.	21,670 kg.
W: 2.438 m	8"	5,137 lbs.	47,773 lbs.
H: 2.327 m	7' 7 1/2"		

40' FLAT RACK

L: 11.820 m	38' 9 1/4"	5,260 kg.	25,220 kg.
W: 2.148 m	7' 1/2"	11,596 lbs.	55,600 lbs.
H: 2.095 m	6' 10 1/2"		

40' COLLAPSIBLE FLAT RACK

L: 12.080 m	39' 7 1/2"	5,800 kg.	29,200 kg.
W: 2.126 m	6' 11 1/2"	12,787 lbs.	64,374 lbs.
H: 2.043 m	6' 8 1/4"		

SEAINDIA

ANCHOR AIRGED